



SureStrike™ .45 caliber Adapter User Guide:

LASER AMMO
TRAINING TECHNOLOGIES

SureStrike Adapters let you apply the standard 9mm SureStrike laser dry fire training system to a specified weapon caliber.

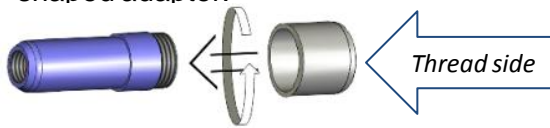
Step 1:

Separate the back and front end of your laser bullet.



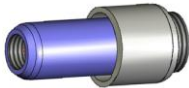
Step 2:

insert the laser casing (front of the bullet) onto the ring shaped adapter.



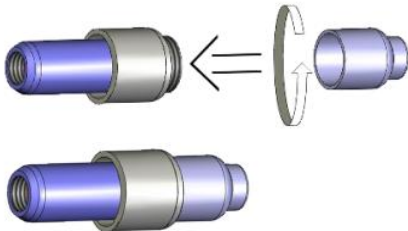
Step 3:

Engage the thread. Please note the threading on the adapter is to engage AFTER the casing is inserted. Caution: do not use force.



Step 4:

Insert the battery back into the casing as described in the user guide and attach the bullets back cap onto the exposed threading.



Step 5:

Follow user guide step 4 and on for instructions to insert bullet into your gun.